

4000AE™



The First Name In Trailers®

Intelligent re-engineered design that makes the 4000AE™ flatbed lighter without sacrificing strength

Utility engineers have designed a next-generation flatbed that remains true to the company tradition of building trailers proven to be both light weight and strong. The advanced and streamlined 4000AE™ is an evolution of the proven 4000A®, delivering the strength and long-term benefits of a durable “combo” trailer.

The rugged 4000AE weighs less than some all-aluminum trailer designs, yet is available at a combo-trailer price. It comes standard with a 47,000 lbs coil haul package, yet weighs 536 lbs less than the 4000A base model, and 627 lbs less than the 4000A flatbed when spec'd with an optional coil haul package.

The patent-pending 4000AE design optimizes weight while not sacrificing strength or functionality. It introduces a combination of high strength aluminum 3" and 4" crossmembers that have been thoroughly tested for fully distributed and/or concentrated coil hauls. Tested on Utility's own torture test track ensures that the 4000AE is the most efficient and productive flatbed available, providing long-term value and lower total cost of ownership.



HEAVY-DUTY, LIGHT WEIGHT FEATURES

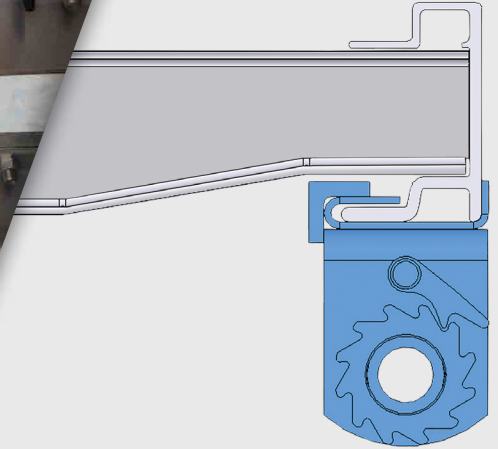


The First Name In Trailers®



Newly Designed Coil Haul Crossmembers

Nine 4" aluminum, full width tapered crossbars on 8" centerlines provide optimized strength for coil haul shotgun configurations.



Light, High Strength, Low Maintenance

Lighter than the other members of Utility's flatbed family, there is no compromise on quality and strength. The 4000AE strikes the right balance between steel and aluminum to provide the strength and durability of an all-steel trailer and the low weight of an all-aluminum trailer. Exterior main beams are shot blasted with a two-part primer and two-part urethane top coat prior to painting; while the interior beams are painted with a rust preventative coating for lower maintenance cost.



Aluminum Leg Bracing

The aluminum tube leg bracing replaces steel angle, reducing weight without compromising strength.

* Specifications, data, and images are subject to change without notice.

